

## PDU BASIC 0U, 1 PHASE 16A, 20 C13 + 4 C19 LOCKING OUTLETS, IEC-320 C20

Cat. No: 6 469 61



CONTENTS	Page
1. KEY FEATURES .....	1
2. INPUT .....	1
3. OUTPUT .....	1
4. MECHANICAL FEATURES .....	2
5. ENVIRONMENTAL CHARACTERISTICS .....	2
6. ELECTRICAL DIAGRAM .....	3
7. DIMENSIONS .....	3
8. MOUNTING SOLUTIONS .....	4
9. STANDARDS AND REGULATIONS .....	5

### 1. KEY FEATURES

Linkeo Data Center PDUs provide electric power for IT equipment in 19" enclosures.

They have been designed with specific features for Data Center applications.

Each C13 and C19 outlets are numbered and equipped with a cord locking (100 Newton retention force).

PDUs with several circuits are equipped with hydraulic magnetic circuit protection. Hydraulic magnetic circuit breakers are not affected by ambient temperature.

High ambient temperature rating: 55°C

Easy installation thanks to 330° rotating cable input and button-type brackets

### 2. INPUT

Input Plug	IEC-320 C20
Cord Length	No
Cord Entry	No
Cable Type	No
Maximum Input Current	16A
Nominal Input Voltage	230V, Single-phase
Rated Input Voltage	200 - 240V
Input Frequency	50Hz
Power Capacity	3.7kW at 230V

### 3. OUTPUT

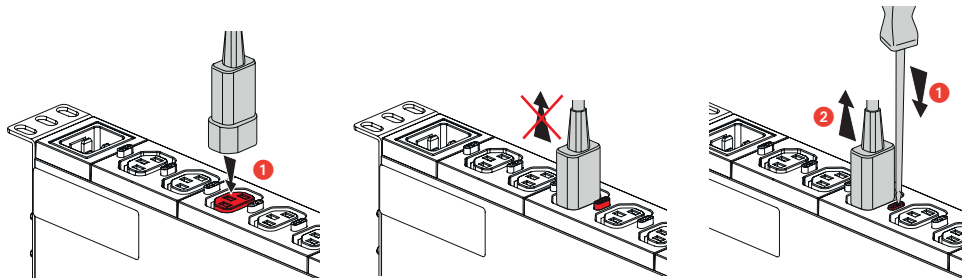
Nominal Output Voltage	230V
Outlet type	20 C13 + 4 C19
Cord locking system	Yes
Cord Retention	100 N
Circuit breakers	No
Circuit breakers type	No

**Cable locking system on C13/C19 sockets**

The cable is locked mechanically into the socket to prevent any unintended disconnection (caused by maintenance, vibrations, etc.).

Pull-out force 100 N

This universal solution is compatible with any standard compliant cord type on the market.



**4. MECHANICAL FEATURES**

- Casings: 6060 T5-R19 natural anodised aluminium

- Outlet modules:

PC/ABS

CW507L (CuZn 36) brass

- Fixing brackets:

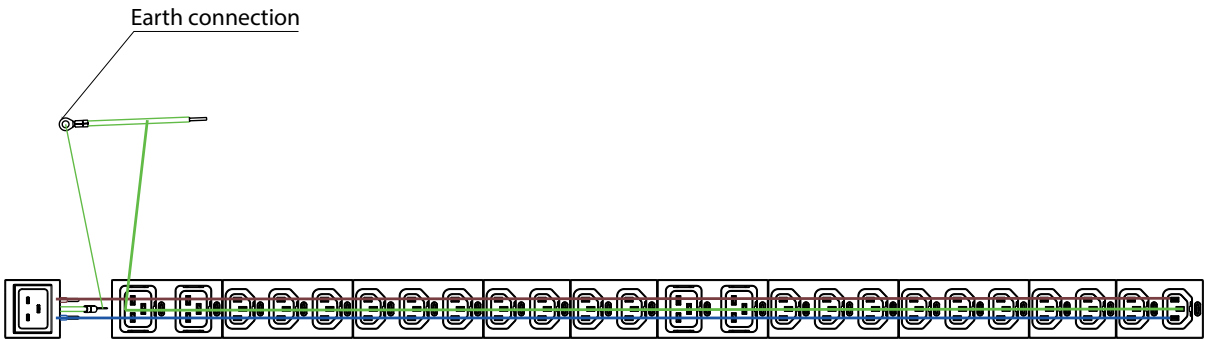
DC01-A-m galvanised steel

Color	Aluminium grey (casing) / black (outlet modules)
Casing	Zero-U, aluminium
IP	20
IK	04

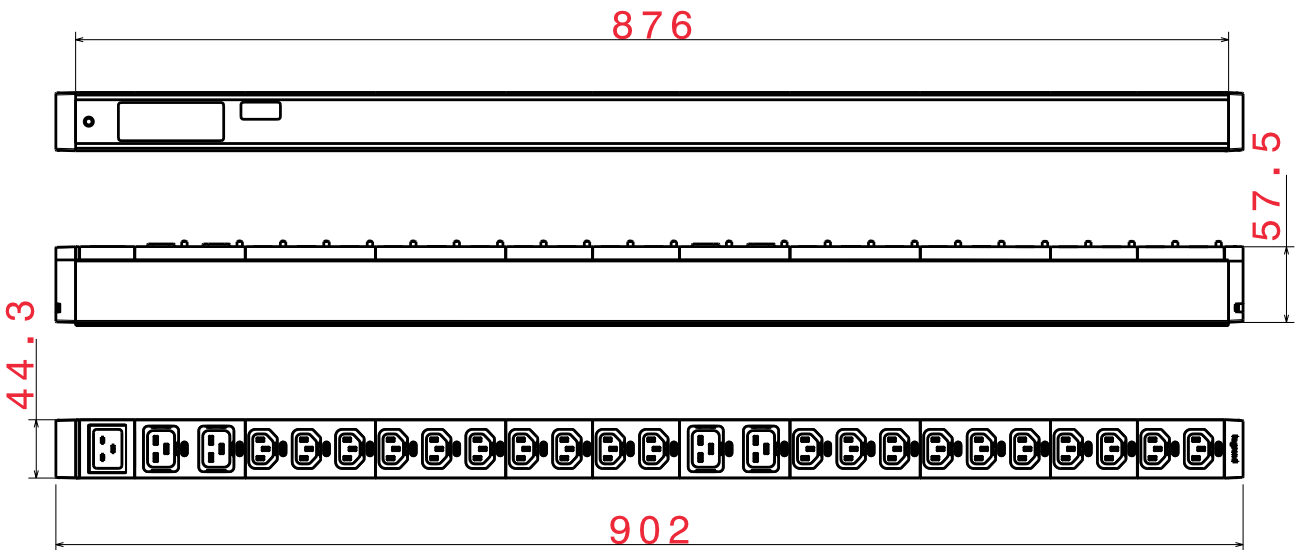
**5. ENVIRONMENTAL CHARACTERISTICS**

Storage and transport temperature	-20 to +70°C
Operating temperature	+5°C to +55°C
Operating Relative Humidity	5% to 95%
Operating Elevation	0 - 2000 m

6. ELECTRICAL DIAGRAM



7. DIMENSIONS



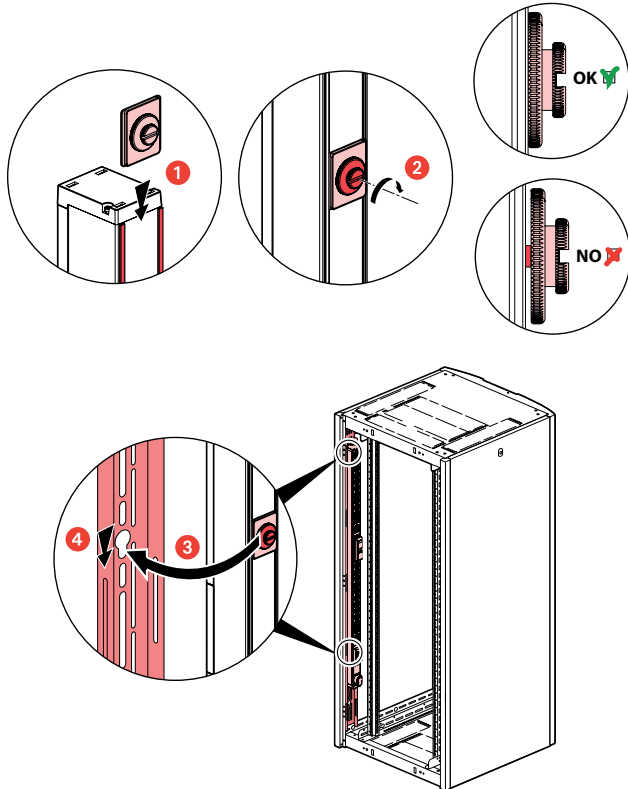
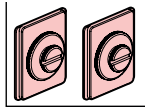
## 8. MOUNTING SOLUTIONS

### 8.1 INCLUDED

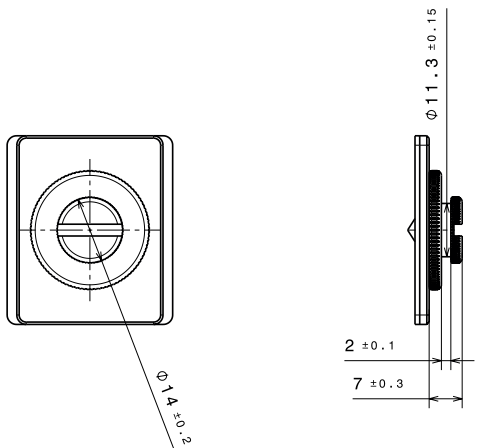
Delivered with 2 different sets for mounting in a rack.

#### Set of 2 buttons

Screwless fixing. The height of the fixing centre can be set at any point along the full height of the PDU by sliding the button slots into the groove on the rear of the PDU. Tightened using a screwdriver.

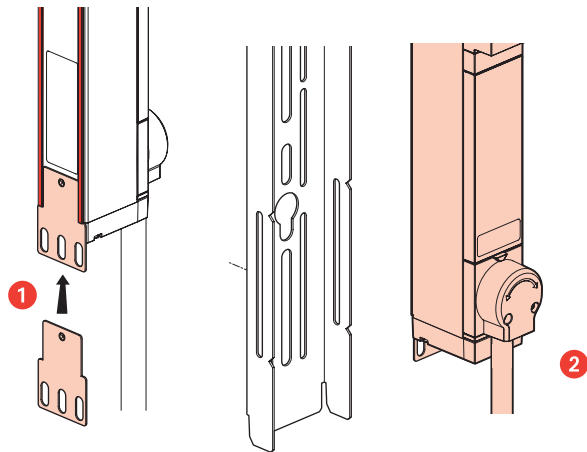
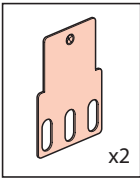


Button dimensions

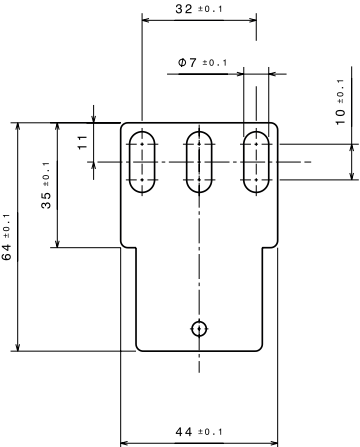


#### Set of 2 standard fixing brackets

Screw-fixing (screws not included)



Dimensions of standard fixing bracket



Fixing centres (min.-max.) with standard brackets : 914mm - 934mm

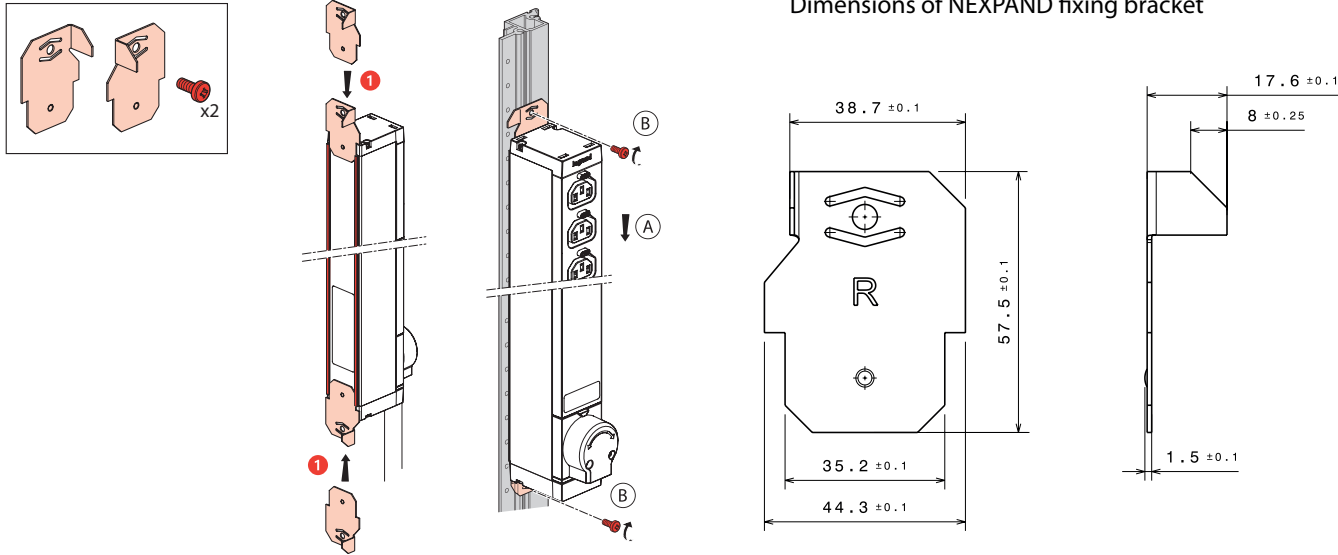
**8.2 OPTION**

**Brackets for Nexpan racks**

Screw-fixing (2 screws included)

Ref. 981227 Set of 2 brackets (for 1 PDU)

Ref. 981228 Set of 20 brackets (for 10 PDUs)



**9. S STANDARDS AND REGULATIONS**

**9.1 STANDARDS**

Application	Standards
Safety	IEC 62368-1
C13 and C19 connectors for electrical equipment	IEC 60320-2-2 IEC 62368-1
Circuit breakers	Not Applicable
Industrial plugs	Not Applicable
Information and communication technology equipment	IEC 62368-1
Electromagnetic compatibility	EN 62311 (2008) EMF EN 50491-5-2 EN 50491-5-3 EN 55035 EN 55032 EN 61000-4-11 EN 61000-4-2 EN 61000-4-3 EN 61000-4-4 EN 61000-4-5 EN 61000-4-6 EN 61000-3-2

**9.2 REGULATORY APPROVALS**

CE, UKCA, CMIM  
RoHS directive (Restriction of Hazardous Substances).  
REACH regulations (Registration, Evaluation, Authorisation & restriction of Chemicals).